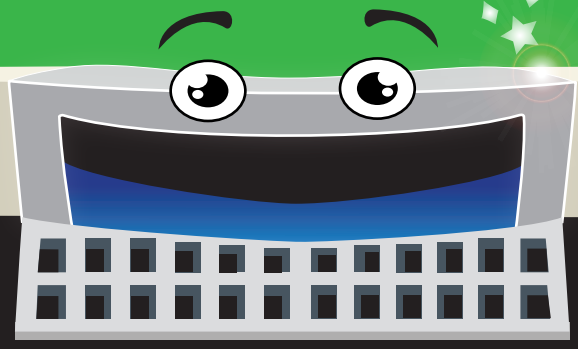
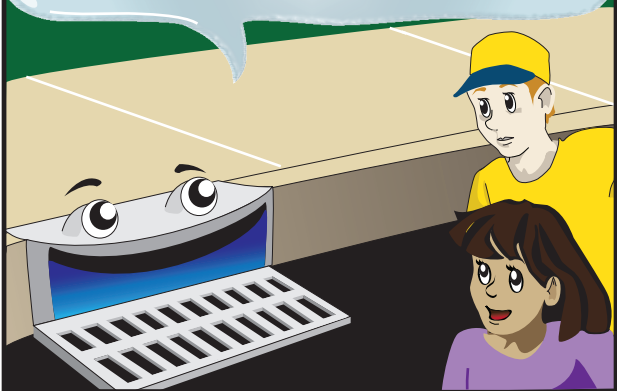


GURGLE and his Downstream Friends



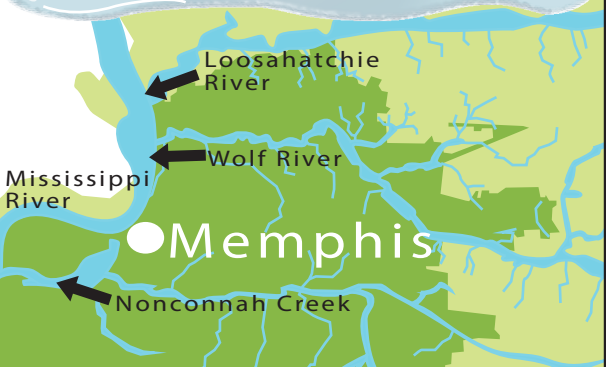
REMEMBER KIDS, RAIN CAN CARRY POLLUTANTS LIKE TRASH INTO A STORM DRAIN. THE STORM WATER DRAINAGE SYSTEM CARRIES IT TO OUR RIVERS AND STREAMS.



THIS IS PART OF THE WATERSHED, AN AREA OF LAND THAT DRAINS TO THE SAME WATERBODY. WE ALL LIVE IN A WATERSHED AND MEMPHIS HAS FOUR.



A SMALLER WATERSHED CAN DRAIN TO A LARGER WATERSHED. NONCONNAH CREEK, WOLF RIVER, AND LOOSAHATCHIE RIVER WATERSHEDS DRAIN TO THE MISSISSIPPI RIVER WATERSHED.



THE MISSISSIPPI RIVER WATERSHED DRAINS TO THE GULF OF MEXICO AND THE GULF OF MEXICO DRAINS TO THE NORTH ATLANTIC OCEAN.



ONLY RAIN DOWN THE STORM DRAIN!

Our storm water affects the water quality and wildlife of Memphis rivers and all those downstream of us.

